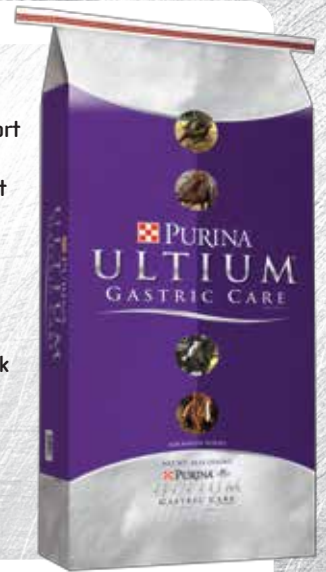


*Purina® Ultium® Gastric Care horse formula was developed by Purina's PhD Equine Nutritionists and Veterinarians to provide consistent support during times of stress. This feed is the culmination of decades of Purina equine nutrition research, and contains specialized ingredients designed to support a healthy gastric environment and immune system.*

**Ultium® Gastric Care formula contains:**

- A full serving of Purina® Outlast™ supplement to support gastric health and proper pH
- A specialized yeast extract to provide immune support for horses affected by the stress of competition
- Highly digestible fiber sources, including beet pulp, alfalfa meal, and soy hulls, to support an optimal hindgut environment
- Energy to support high-performing horses
- High quality amino acids for a strong topline and quick muscle recovery
- Purina® Amplify® supplement, which includes multiple sources of fatty acids from flaxseed, stabilized rice bran, and vegetable oils to help maintain body condition, healthy hair, coat, and skin



**GASTRIC SUPPORT SUPPLEMENT**



**IMMUNE SUPPORT ADDITIVE**

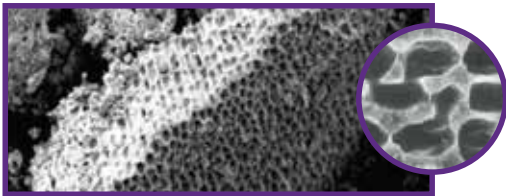


**HIGH FAT NUGGET**

**CONSISTENCY IS KEY**

Horses thrive on consistency, but there's nothing consistent about competition: performance schedules are anything but predictable, new neighbors arrive in adjoining stalls, and arenas and environments are constantly changing. This inconsistency can take a toll- affecting health, attitude, and performance. In fact, even common activities including stall confinement, exercise, and transportation are known to cause stress in horses, which may challenge their immune systems and can lead to gastric discomfort.

Purina® Ultium® Gastric Care horse formula helps equine athletes during the stress of competition by providing optimal gastric and immune support.



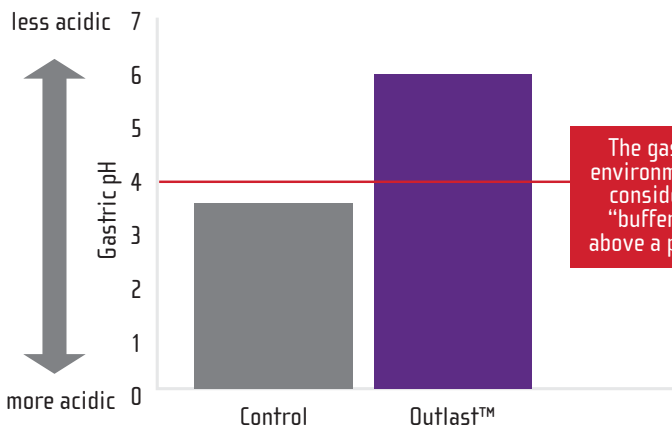
Electron microscope images showing the porous structure of the proprietary mineral complex

*Outlast™ supplement contains a proprietary mineral complex with a unique honeycomb structure. The porous structure of this natural and bioavailable source of calcium and magnesium increases its surface area and enhances its capacity to support proper gastric pH.*

Purina® Ultium® Gastric Care contains Outlast™ Gastric Support Supplement, which was developed by our Ph.D. Equine Nutritionists to support a healthy gastric environment. Take a look at what makes Outlast™ supplement unique:

*Equine gastric pH is less acidic in horses supplemented with Outlast™ supplement*

**GASTRIC PH 2 HOURS AFTER SUPPLEMENTATION**



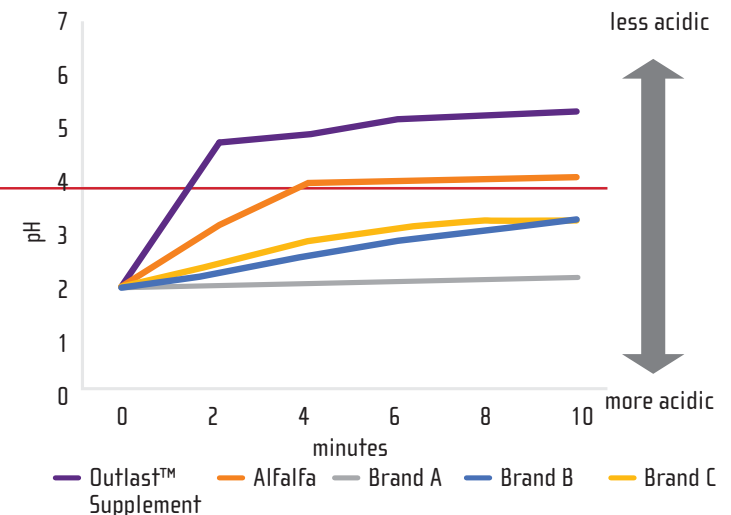
The gastric environment is considered "buffered" above a pH of 4

\*The Control supplement and Outlast™ supplement contained similar nutrient profiles.

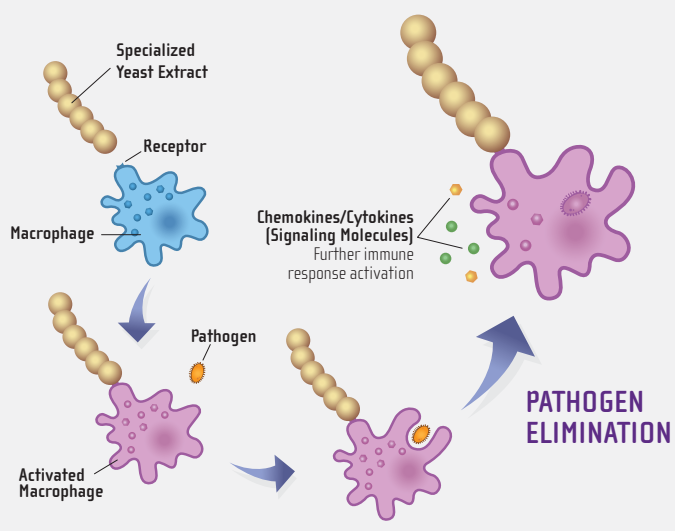
To learn more about the research behind Outlast™ supplement and the Purina® Equine Gastric Health Program, visit [www.FeedOutlast.com](http://www.FeedOutlast.com).

*Outlast™ supplement buffers faster and to a higher pH than other products on the market*

**BUFFERING SPEED IN A SIMULATED GASTRIC ENVIRONMENT**



**THE SPECIALIZED YEAST EXTRACT WORKS BY ACTIVATING THE IMMUNE SYSTEM TO BE PREPARED FOR CHALLENGES IT WILL INEVITABLY FACE.**



Studies show that horses can experience suppressed immune function during times of stress. Research conducted by Purina Animal Nutrition in conjunction with University researchers showed that supplementation with the specialized yeast extract supported immune response during a challenge.

When immune cells bind with the specialized yeast extract, this sets into motion a cascade of events that prime these cells to quickly and efficiently eliminate pathogens (i.e. viruses and bacteria). These primed immune cells are then able to more rapidly respond to pathogen exposure, which is especially beneficial for stressed horses that may already have suppressed immune function.

|   | WEIGHT OF HORSE IN POUNDS                  |       |       |       |       |
|---|--|-------|-------|-------|-------|
|   | 600  | 800   | 1000  | 1200  | 1400  |
|   | (lbs/day)                                  |       |       |       |       |
| <b>Minimum Hay or Equivalent Pasture*</b> | 7.00                                       | 9.50  | 12.00 | 14.50 | 17.00 |
|   | Ultium Gastric Care Horse Feed (lbs/day)** |       |       |       |       |
| <b>Maintenance Elevated Activity</b>      | 2.00                                       | 2.75  | 3.25  | 4.00  | 4.50  |
| <b>Light Work</b>                         | 3.00                                       | 4.00  | 5.00  | 6.00  | 7.00  |
| <b>Moderate Work</b>                      | 4.25                                       | 5.50  | 6.75  | 8.00  | 9.50  |
| <b>Heavy Work</b>                         | 5.25                                       | 7.00  | 8.50  | 10.25 | 12.00 |
| <b>Very Heavy Work</b>                    | 7.75                                       | 10.25 | 12.75 | 15.25 | 17.75 |

4 lbs of Ultium® Gastric Care provides 1 full serving of Outlast™ supplement. If feeding less than this amount in one meal, we recommend top-dressing with 100 g (3/4 cup) Outlast™ supplement for optimal buffering.

- \* This is the recommended minimum amount of hay to be fed. If feeding more hay, reduce the feeding rate of Ultium® Gastric Care Horse Feed by 1.0 lb for every additional 2.0 lbs of hay fed.
- \*\* Do not feed less than 0.3 lbs per 100 lbs of body weight per day to meet minimum protein, vitamin and mineral requirements for maintenance. If your horse gains too much weight at that minimum feeding rate, then you should replace Ultium® Gastric Care Horse Formula with a lower calorie Purina® Horse Feed option or Purina® Enrich Plus® Ration Balancing Horse Feed, and supplement with Purina Outlast™ Gastric Support Supplement.

**IMPORTANT:** For horses sensitive to dietary carbohydrates, please consult with a veterinarian or nutritionist for a recommended diet.

The proprietary ingredients in Ultium® Gastric Care conform to the rules of competition and racing when fed as directed.

**CAUTION:** Follow label directions: Feeding added selenium at levels in excess of 0.3 ppm in total diet is prohibited. Store in a dry, well-ventilated area protected from rodents and insects. Do not feed moldy or insect-infested feed as it may cause illness or death.

**GUARANTEED ANALYSIS**

|  |   |
|--|---|
| Crude Protein (Min) . . . . . 12.50 %                  | Calcium (Ca), (Max) . . . . . 1.45 %    |
| Lysine (Min) . . . . . 0.90 %                          | Phosphorus (P), (Min) . . . . . 0.60 %  |
| Crude Fat (Min) . . . . . 10.50 %                      | Sodium (Min) . . . . . 0.2%             |
| Crude Fiber (Max) . . . . . 18.00 %                    | Sodium (Max) . . . . . 0.7%             |
| Acid Detergent Fiber (ADF), (Max) . . . . . 21.00 %    | Copper (Cu), (Min) . . . . . 80.00 ppm  |
| Neutral Detergent Fiber (NDF), (Max) . . . . . 36.00 % | Selenium (Se), (Min) . . . . . 0.60 ppm |
| Starch (Max) . . . . . 10.00 %                         | Selenium (Se), (Max) . . . . . 0.72 ppm |
| Sugars (Max) . . . . . 7.00 %                          | Zinc (Zn), (Min) . . . . . 280.00 ppm   |
| Calcium (Ca), (Min) . . . . . 0.95 %                   | Vitamin A (Min) . . . . . 3000 IU/LB    |
|  | Vitamin E (Min) . . . . . 125 IU/LB     |

**INGREDIENTS**

Wheat Middlings, Dehydrated Alfalfa Meal, Ground Soybean Hulls, Dried Beet Pulp, Soybean Oil, Cane Molasses, Wheat Flour, Stabilized Rice Bran, Vegetable Oil, Oat Hulls, Ground Corn, Seaweed-Derived Calcium, Thiamine Mononitrate, Dehulled Soybean Meal, Flaxseed, Magnesium Oxide, Salt, L-Lysine, Calcium Carbonate, DL-Methionine, Citric Acid, Phosphoric Acid, Dicalcium Phosphate, Monocalcium Phosphate, Propionic Acid [a Preservative], Vitamin E Supplement, Colored with Iron Oxide, Yeast Extract, Rice Hulls, Choline Chloride, Copper Sulfate, Zinc Oxide, Vitamin A Supplement, Vitamin D<sub>3</sub> Supplement, Ferrous Sulfate, Manganous Oxide, Vitamin B<sub>12</sub> Supplement, Calcium Iodate, Sodium Selenite, Riboflavin Supplement, Cobalt Carbonate, Calcium Pantothenate, Niacin Supplement, Preserved with Mixed Tocopherols (Form of Vitamin E), Ferrous Carbonate, Rosemary Extract.

**PURINA ANIMAL NUTRITION CENTER**

*Since 1926, the Purina Animal Nutrition Center in Gray Summit, MO has been defining and delivering the future of equine nutrition with a unique philosophy: Combine the finest ingredients with exhaustive research and you'll create unsurpassed nutrition for every type of horse. To learn more, ask your local Purina® feed retailer or sales representative about visiting our Equine Research Facility. Learn more at [www.purinamills.com](http://www.purinamills.com).*

**GUARANTEE**

*If you are not completely satisfied with any Purina® horse feed product, please return it to the Purina® retailer where it was purchased for replacement or a full refund. For more information on this or other Purina® horse feeds, visit [purinamills.com/horse-feed](http://purinamills.com/horse-feed) or call 1-800-227-8941.*