

Purina® Ultium® Growth Horse Formula is a super-premium, high-fat, high-fiber horse feed researched and formulated specifically for broodmares and young growing horses. Backed by scientific research spanning over four years monitoring and measuring growth curves, body condition, joint health, activity levels, blood work and more, this unique, industry-leading nutrition supports the development, growth and adaptive physiology necessary to produce a strong, healthy, athletic horse.

ULTIUM® GROWTH FORMULA:

- Is a Unique Formulation High in Fat and Fiber for Broodmares and Growing Horses
- Helps Mares Maintain Ideal Body Weight and Body Condition During Lactation
- Supports Steady, Consistent Foal Growth and Development



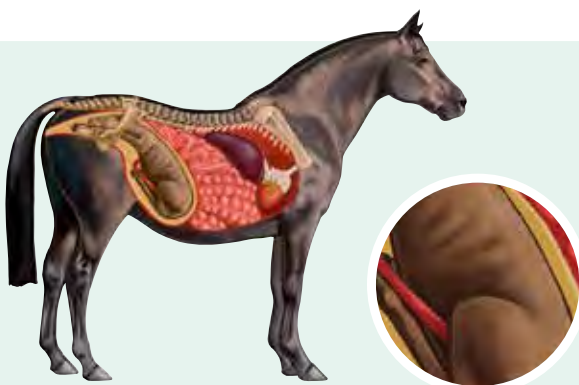
MANAGING THE BROODMARE AND GROWING HORSE

Nutrition demands for broodmares and growing horses are extremely high, so the delivery of nutrients becomes paramount. Ultium® Growth Horse Formula is a unique blend of pellets and patented, extruded high-fat Purina® Amplify® Nuggets that is palatable and highly digestible for young horses and broodmares. It's also nutrient-dense and highly efficient so you can feed less. This is great for broodmares that don't have much "room to spare" and young horses with small, developing digestive tracts.

A proprietary blend of vegetable oils and the naturally-occurring oils in rice bran and flaxseed help support balanced immune system function, smooth growth rates and shiny hair coats. These vegetable oils also make Ultium® Growth very energy dense to help maintain healthy body weights in broodmares and young growing horses as they prepare for their athletic careers.

NEEDS OF BROODMARES & GROWING HORSES

1



MARE IN FOAL

Ultium® Growth Horse Formula contains a concentrated calorie delivery system that supports the mare through all stages of gestation, with more total calories from added fat and fiber and lower sugar and starch. Lower feeding rates help support digestive health during this essential time.

Your foal's best start begins with proper fetal development. Ultium® Growth Horse Formula provides research-determined amounts of nutrients, including copper and zinc for developing fetal liver stores to set the foundation for correct growth.

2

LACTATION/SUCKLING FOAL

Suckling foals may nurse up to 80 times per day. Ultium® Growth Horse Formula provides additional milk components to support immune function, calorie, and nutrient transfers to active, growing foals.

Lactating mares can require over 35,000 kcal/day to produce adequate milk and maintain body condition. The concentrated calorie delivery system of Ultium® Growth Horse Formula provides the necessary calories during this critical period for both mare and foal sustenance.



FEATURES

Unique Blend of Pellets and Proprietary, Extruded, High-fat Purina® Amplify Nuggets

Sustained Energy System®

Proprietary Blend of Vegetable Oils

Targeted Nutrition Delivery™ System

Highly Digestible Fibers Including Beet Pulp and Soy Hulls

Reduced Starch and Sugar

Supportive Antioxidants such as Vitamin E and Selenium

Balance of Vitamins and Minerals Such as Copper, Zinc, Calcium and Phosphorus

Nutritionally Balanced

Consistently Fresh, Quality, Natural, Highly Digestible Ingredients

BENEFITS

Palatable and highly digestible for young horses and broodmares; is nutrient dense and highly efficient so you can feed less. Proprietary blend of vegetable oils, flaxseed and rice bran provide an optimal Omega 3 and 6 fatty acid profile that supports immune function.

Contains a unique blend of three fuel sources: Fats, Fermentable Fibers and Soluble Carbohydrates (controlled starch and sugar) that provide a steady flow of energy for developing and growing foals.

A blend of vegetable oils and naturally-occurring oils in rice bran and flaxseed help promote balanced immunity, smooth growth rates and shiny coats.

Transports nutrients efficiently to where they are needed most. Unique individual amino acid formulation supports strong muscle development and growth. The balance of nutrients supports proper joint and long bone maturity. It all sets the stage for the young athlete to start off right and continue on the correct path to competition.

Provides fermentable fiber to the hindgut for a slow-release calorie source that helps support weight maintenance and consistent lactation in broodmares and steady growth in young, growing horses.

Reduced starch and sugar combined with feeding higher levels of fat and digestible fiber helps to minimize the risk of hindgut disturbances associated with high starch feeding practices.

Help support cellular metabolism and a strong immune system.

Essential ratios and quantities of these key vitamins and minerals help assure proper fetal stores during gestation, milk levels during lactation and tissue concentrations for continued growth.

Provides 100% of the required nutrients for horses when fed as directed with free-choice or added salt* so no additional supplements are necessary. *Based on "Nutrient Requirements of Horses Sixth Revised Edition - 2007" published by the National Research Council.

Superior, consistent, natural ingredients that provide nutrient density and support proper digestion.



Formulated With
AMPLIFY
HIGH-FAT SUPPLEMENT



- Ingredient testing program designed to minimize the risk of grains containing potentially harmful contaminants.
- Utilizes a constant nutrition formulation process that automatically compensates for naturally varying nutrient levels in ingredients for greater nutritional consistency bag after bag.
- Uses a total horse nutrition formulation that considers all key nutrients and their interactions with each other to better support overall horse health.

GUARANTEED ANALYSIS

Crude Protein (min)	15.50%	Sodium (Na) (min)	0.10%
Crude Fat (min)	9.50%	Sodium (Na) (max)	0.50%
Crude Fiber (max)	13.00%	Copper (Cu) (min)	90.00 ppm
Lysine (min)	1.00%	Selenium (Se) (min)	0.60 ppm
Calcium (Ca) (min)	1.40%	Selenium (Se) (max)	0.61 ppm
Calcium (Ca) (max)	1.90%	Zinc (Zn) (min)	270.00 ppm
Phosphorus (P) (min)	0.70%	Vitamin A (min)	3,400 IU/lb
		Vitamin E (min)	150 IU/lb



A DIFFERENCE YOU CAN SEE™
Purina Animal Nutrition
1080 County Road F West
Shoreview, MN 55126

GUARANTEE

If you are not completely satisfied with any Purina® horse feed product, please return it to the Purina® retailer where it was purchased for replacement or a full refund.

INGREDIENTS

Wheat Middlings, Dehulled Soybean Meal, Ground Corn, Dehydrated Alfalfa, Ground Soybean Hulls, Cane Molasses, Stabilized Rice Bran, Dried Beet Pulp, Vegetable Oil, Flaxseed, Calcium Carbonate, Soybean Oil, Lignin Sulfonate, Monocalcium Phosphate, Dicalcium Phosphate, Salt, L-Lysine, DL-Methionine, Thiamine Mononitrate, Magnesium Oxide, Sodium Selenite, Dried Whey Solubles, Iron Oxide, Citric Acid, Calcium Iodate, Magnesium Oxide, Cholecalciferol, Cobalt Carbonate, Ferrrous Carbonate, Manganous Oxide, DL-Alpha Tocopherol Acetate, Choline Chloride, Pyridoxine Hydrochloride, Propionic Acid (a preservative), Copper Sulfate, Zinc Oxide, Sorbitan Monostearate, Calcium Pantothenate, Anise Flavor, Tocopherols (a preservative), Vitamin B₁₂ Supplement, Riboflavin, Nicotinic Acid, Vitamin A Acetate, L-Threonine, L-Tryptophan.

Ruminant Meat- and Bone Meal-Free.

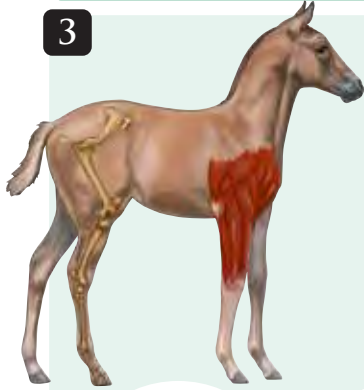
Please consult complete feeding directions found on the bag. Feeding recommendations may also be obtained from a Purina® horse feed sales representative.

Optium # 353R
Product # 0041885

For more information, consult your Purina Retailer, or visit us at purinamills.com/horse-feed.

NEEDS OF BROODMARES & GROWING HORSES (CONTINUED)

3



WEANLING/YEARLING

Ultium® Growth Horse Formula helps support strong bone development by using high-quality nutrient sources. Amino acids, vitamins and minerals are supplied in optimal amounts and ratios as determined by research studies to provide the necessary building blocks for bone growth.

Young growing horses need carefully-balanced nutrition for optimal muscle development to grow into successful athletes.

The protein quality and amino acid fortification of Ultium® Growth Horse Formula assist in the foundation, maturation and maintenance of healthy muscle.



4

TWO-YEAR OLDS & OLDER

For young horses that are still growing, and may have begun their athletic training, Ultium® Growth Horse Formula provides the necessary nutrients to support both growth and the special challenges of exercise. It can be fed to all growing horses that are also exercising until they reach skeletal maturity (approximately 2-4 years of age depending on breed, please consult your veterinarian).



Once full grown, transition your young athlete to original Ultium® Competition Horse Formula. This super-premium nutrition delivers a concentrated cool stream of energy, providing the fuel in a manner that helps maximize athletic performance.

FEED MANAGEMENT OF THE BROODMARE & GROWING HORSE

FEEDING DIRECTIONS WITH HAY OR PASTURE

Feeding young growing horses starts with the proper nutrition of the gestating mare. Start with the amounts given for the age, weight and class of the horse. However, individual horse variation may require feeding rate adjustment by plus or minus 10 to 15%. Therefore, the horse's body condition should be assessed at regular intervals (every 2 to 3 weeks) and the amount fed either increased or decreased to maintain the desired body condition. More specific recommendations may also be obtained from a Purina Horse Feed sales representative.

Feed at regular times. Do not feed more than 0.5 lbs per 100 lbs of body weight in one serving. Divide total daily feeding into at least two servings with three daily servings preferred. Be sure to weigh your feed using a scale. A small scale can be purchased in the fishing department of many sporting goods stores.

Feed horse in a natural position from troughs placed at normal head height or lower. Do NOT feed free-choice (all the horse wants). Reduce and/or delay feeding a horse that is hot, excited or showing pain, fever or diarrhea. Consult your veterinarian if any problems arise. Prevent rapid eating.

Changes in diet should be gradual. A 7 to 10 day period should be allowed to reach recommended feeding rates. Further increases in feeding rate should not exceed one pound per day for an individual horse. Always feed a minimum of 1 lb per 100 lbs of body weight of good quality hay and/or pasture. Inadequate amounts or poor quality hay may lead to colic and other digestive disturbances.

Have plenty of fresh, clean water available at all times, except immediately after intense physical exercise. Salt should be provided free-choice to all horses. Maintain a regular deworming program, have the horse's teeth examined annually and consult your veterinarian on a regular basis.

Always follow label directions. Feeding added selenium resulting in total diet levels in excess of 0.3 ppm is prohibited. Store in a dry, well-ventilated area protected from rodents and insects. Do not feed moldy or insect-infested feed to animals as it may cause illness or death.

BROODMARES

WEIGHT OF HORSE IN POUNDS

	600	800	1000	1200	1400
Minimum Hay or Equivalent Pasture*	7.0	9.5	12.0	14.5	17.00
ULTIUM® GROWTH HORSE FORMULA (LBS/DAY)**					
Gestating Mare, last 90 days	3.25	4.25	5.25	6.00	7.00
Lactating Mare**	7.0	9.00	11.25	13.50	15.75

GROWING HORSES

WEIGHT OF HORSE IN POUNDS

	300	400	500	600	700	800	900	1000
Minimum Hay or Equivalent Pasture*	3.00	4.00	6.00	7.00	8.50	9.50	11.00	12.00
ULTIUM® GROWTH HORSE FORMULA (LBS/DAY)***								
Growing Horses, Weanlings and 2-Year Olds***	6.50-7.50	7.00-7.75	6.25-8.25	6.75-9.00	7.00-9.00	7.25-9.00	7.00-8.75	6.75-8.50

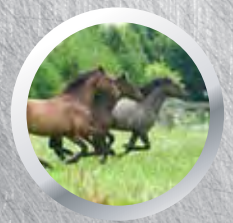
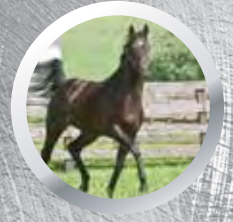
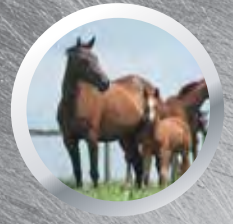
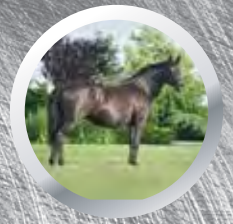
* These recommendations are based on the mare or growing horse eating the minimum recommended amount of hay per day (1.2 lbs per 100 lbs of body weight for mature horses, 1.0 lb per 100 lbs body weight for 300 to 400 lb weanlings, or 1.2 lbs per 100 lbs body weight for 500 to 1000 lb growing horses). If feeding more hay, reduce the amount of Ultium® Growth Horse Formula by 1.0 lb for every 2 lbs of additional hay fed. EXAMPLE: Using the chart at left, if feeding 16 lbs of hay to a 1000 lb lactating mare, reduce Ultium Growth Horse Formula offered by 2.0 lbs from 11.25 to 9.25 lbs per day (4.0 lbs of additional hay divided by 2.0 lbs = 2.0 less of Ultium® Growth Horse Formula).

** Do not feed less than 0.45 lbs of Ultium® Growth Horse Formula per 100 lbs body weight per day for lactating mares. EXAMPLE: 4.5 lbs for 1000 lb mare. Do not feed less than .9 lbs of Ultium® Growth Horse Formula per 100 lbs body weight for weanlings 700 lbs or less. EXAMPLE: 3.6 lbs for 400 lb weanling. For growing horses weighing over 700 lbs, do not feed less than .65 lbs per 100 lbs body weight. EXAMPLE: 6.5 lbs for a 1000 lb growing horse. If your horse gains too much weight at that minimum feeding rate, then you should replace Ultium® Growth Horse Formula with Purina® Enrich Plus® Ration Balancing Feed, and feed according to feeding directions.

*** Adjust amount fed to achieve desired growth rates. Feed amounts from lower end of range for more moderate growth rate and amounts from upper end of range for more rapid growth rate. For growing horses in training, adjust feeding rate to maintain body condition according to level of work, making any changes in feed gradually.

For suckling foals, begin offering feed within 2 weeks of birth. Feed 1.0 lb of Ultium® Growth Horse Formula per month of age per day. EXAMPLE: For a 2-month old suckling foal, feed 2.0 lbs per day added to the mare's ration or fed in a separate creep feeder.

 PURINA
ULTIUM[®]
GROWTH
HORSE FORMULA



**PREMIUM NUTRITION
FOR BROODMARES AND
YOUNG GROWING HORSES**