

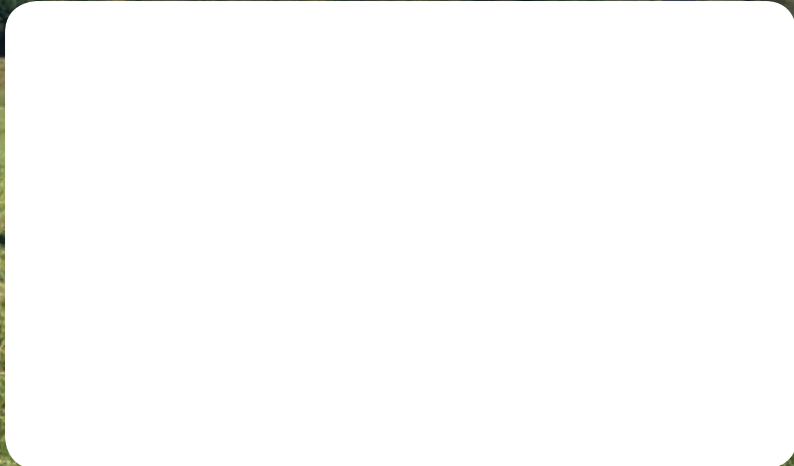
SINCE



1929

PRST STD
U.S. Postage
PAID
Permit No. 80
Staunton, VA

AUGUSTA COOPERATIVE FARM BUREAU, INC.
1205B RICHMOND RD.
STAUNTON, VA 24401



AUGUSTACOOP.COM / AUGUSTACOOPFB / AUGUSTACOOPFB

November 2019

AGRONOMY & BEEF BULLETIN



1929



SINCE

BODY CONDITION AT CALVING IS STILL A KEY TO REPRODUCTIVE SUCCESS

Body condition score is an important management tool when it comes to getting cows bred back and ensuring a year without missed profits.

Most small- to medium-sized ranching operations do not have scales to routinely weigh cattle and determine weight and body condition changes. Body condition scoring is a manner of evaluating the fatness and therefore the nutritional status of beef cows. However, everyone has the capability to visually observe cows from the pickup window or on horseback.

Related: How bred cow nutrition affects body condition
Body condition is categorized by a scoring system based on "1" being very emaciated and "9" is extremely obese. Most commercial range cows will be in the middle three scores of 4, 5, and 6.

One of the major constraints in improving reproductive efficiency of beef cows is the duration of the post-calving anestrus period.

Related: Go beyond body condition score basics with these 10 tips

The "anestrus period" is defined as the days between calving and the return to normal heat cycles. If cows are to maintain a calving interval of one year, they must conceive within 80 to 85 days after calving. Body condition at calving time determines to a great extent the re-breeding performance of beef cows in the subsequent breeding season.

Body condition at calving tends to determine the number of days before the cow returns to heat cycles. It also greatly impacts the likelihood that the cow will rebreed in the upcoming breeding season and have another calf on time next year.

Based on research of mature and young cows from several studies, cows that maintained body weight and therefore ample energy reserves before parturition exhibited heat cycles sooner than cows that lost considerable body weight and consequently had poor energy reserves.

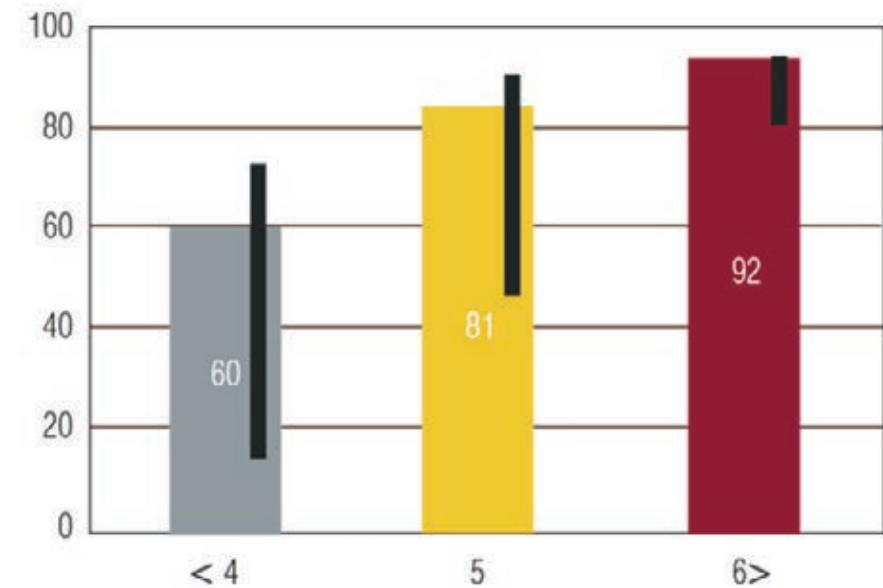
The bars show the percentage of exposed cows that became pregnant in the next breeding season. The black lines aside the bars illustrate the variation in the rebreeding performance in the trials utilized in the summary.

Note a wider range of outcomes in the thinner body condition scores of 4 (or less) and the 5's compared to the cows that were in body condition 6 or greater. This implies that post-calving influences have a greater impact on rebreeding of thin cows compared to those in body condition score 6.

Therefore, cows that returned to heat cycles earlier had more opportunities for heat cycles and ovulation during the breeding season and consequently have higher conception rates.

Glenn Selk - Oklahoma State University emeritus Extension animal scientist. Source: Oklahoma State University

Body condition score at calving and pregnancy rate



Body condition of cows and heifers at calving

FEEDING YOUR PASSION SINCE 1929



Elite™ HORSE FEED INNOVATION FOR EVERY STEP

Elite™ horse feeds offer quality ingredients and added nutrients to support healthy digestion and performance. They are specifically formulated to provide a nutritionally balanced ration for many life stages.

Feed your passion. Try Elite™ horse feed today.

Staunton
(540) 885-1265

Fairfield • Weyers Cave • Scottsville • Bedford
AugustaCoop.com



PROUD TO BE A CERTIFIED
SAFE FEED SAFE FOOD FACILITY

FALL AGRONOMY PLANNING

As we enter into late fall/early winter, weed control in small grain crops should be considered. In a lot of cases, we can do a better job controlling weeds during this period while the weeds are small and have an under developed root system. This can either be done pre-plant or post-plant. Contact us to schedule a time to discuss fall weed control.

Additionally, it is time to start planning corn and soybean seed selection. Augusta Co-op carries NK/Enogen, Dekalb & Asgrow, Croplan, Masters Choice (order only) and Pioneer (Bedford location only). Book now with your Augusta Co-op Agronomy Sales Team to ensure you select the hybrid varieties you want at a discounted pre-pay price. Seed corn deadline is November 15 (8% discount) or again January 11 (6% discount). Fertilizer pre-pay ends January 11 (8% discount).

**NEW!
FLAVOR &
GUT HEALTH
ENHANCEMENT**

AUGUSTA SHOW FEED
SINCE 1929

BEEF SHEEP **SWINE GOAT**

FEEDING YOUR PASSION SINCE 1929
AUGUSTA COOPERATIVE FARM BUREAU, INC.

Augusta Co-op Solutions

Durvet, Insecticide Synergized Delice, Gallon

\$22.99/Gallon

For use on lactating and nonlactating dairy cattle, beef cattle and calves to control lice, horn flies, and face flies. It also aids in the control of horse flies, stable flies, house flies, mosquitoes and black flies. For use on sheep to control sheep keds and lice. For use in and around horse, beef, dairy, swine, sheep and poultry premises, animal hospital pens, kennels and outside meat processing premises to control house flies, stable flies, face flies, gnats, mosquitoes, black flies, fleas, and little house flies. It also aids in the control of cockroaches, ants, spiders, and crickets. Synergized formula that is ready-to-use. Oil based for application anytime of year. Can be poured on or sprayed on. Contains 1% permethrin and 1% piperonyl butoxide.



SKU - 053603

EVENTS / CALENDAR

ROAD TO THE RING WORKSHOP

Thursday, November 7 6 PM – 8:30 PM
Augusta Expo (Fishersville, VA) – Coffee Pavilion
Join Augusta Co-op for an educational workshop! Students ages 9-18, currently enrolled in 4-H or FFA are welcome to attend. Hear from industry leaders, professional showmen, learn the latest trade secrets! All attendees receive one FREE bag of Augusta Show Feed (one per exhibitor). RSVP to Daniel May at DMay@AugustaCoop.com or (540) 294-6140

RED HOT HOLIDAY PRE-BLACK FRIDAY SALE EVENT

Friday, November 15 8 AM – 6 PM
Saturday, November 16 8 AM – 5 PM
Augusta True Value Staunton
1205B Richmond Road
Huge deals in-store on clothing, boots, power tools and much more!

AGRONOMY CUSTOMER APPRECIATION DAY

Friday, February 7 11 AM – 2 PM
Verona Greener Valley Supply
963 Laurel Hill Rd, Verona, VA 24482
Additional information:
RSVP to Staci Alger at (540) 885-1265 x 243 or SAlger@AugustaCoop.com

AUGUSTA CO-OP / ZOETIS BEEF PRODUCER MEETINGS

Monday, November 11 6:30 PM
High's Restaurant
73 W Main St., Monterey, VA 24465
Tuesday, November 12 7:30 AM
Middlebrook Community Center
54 Cherry Grove Rd, Middlebrook, VA 24459
Hear from Zoetis' Dr. Alley on 'Preparing calves for the next stage of production.'
RSVP required by October 31 to Allison Bagley at ABagley@AugustaCoop.com or (540) 885-1265.

END OF YEAR FARM SUPPLY SALE

December 1 – 31
All Augusta Co-op store locations
Additional information or list of sale items:
www.AugustaCoop.com or (540) 885-1265

AUGUSTA CO-OP VENDOR DAY

Wednesday, February 19 3 PM – 8 PM
Weyers Cave Community Center
682 Weyers Cave Rd.
Book your 2020 items at drastically reduced rates at our annual vendor day! Door prizes, food, educational seminars and much more! www.AugustaCoop.com or (540) 885-1265

FALL IS THE TIME TO CONTROL LICE. OR IS IT?

Fall is the time of year we think about lice control in much of the country, but is that the correct timing? More and more we hear producers and veterinarians lament about lack of effectiveness of lice control. Are lice getting harder to treat? Here's a little history.

Cattle can have two types of lice: chewing (or biting) lice and sucking lice. These pests live their entire life cycle on the animal. Yes, some lice can fall off the animal and live in bedding for a few days, but that is of minor significance when we think about controlling the parasite.

The lice causing excessive scratching and hair loss around the neck and shoulders during the winter are actually on the animal the entire year. Lice are at a much lower population during the warmer months of the year, and they seem to infect some animals more easily than others. When the weather turns cooler and the cow's hair grows longer, a louse population explosion ensues.

One way cattle limit the lice population during warm months is by licking themselves and others. A rough cow tongue applied to a slick, summer haircoat is quite efficient in eliminating some annoying lice. In winter, the cow's long, thick haircoat protects the pest from the cattle grooming practice.

If you deworm your cattle with an injectable macrocyclic lactone or ivermectin-type product, you should also pour your cattle with a lice control product. These injectable products are very good at controlling the sucking lice, but lack effectiveness

against the chewing lice. Any newly purchased animals should be poured for lice and quarantined from the herd for 30 days.

When you use a pour-on product for lice control, be sure to apply it from the poll to the tailhead. If the product is just splashed on the neck and shoulders, lice well away from this area have an excellent chance to move even farther away from the product and survive. If you pour from the poll to the tailhead, your chance of success is much greater.

Some lice-control products need two doses to be effective. Read the label to see if you need one dose or two, and always follow label directions.

If you are walking cows through the chute well ahead of winter, this is likely too early to use a lice-control product. Wait until cows start to develop a winter coat to treat them. You want to wait until the louse population explosion occurs so that the insecticide will be the most effective.

In some instances, this later time will correspond to when you give a precalving vaccination to the cows for calf scours and/or an inactivated IBR-BVD vaccination to improve colostral immunity of these pathogens.

Are lice developing resistance to some of the products? While we do not know for sure, it is a possibility. Nonetheless, waiting to treat until the start of winter, pouring from poll to tailhead and following label directions are all things you can do this winter to decrease your chance of an outbreak.

W. Mark Hilton

WWW.AUGUSTACOOP.COM

Augusta Cooperative Farm Bureau, Inc. • 1205B Richmond Rd. • Staunton, VA 24401
p: (540) 885-1265 • f: (540) 885-5582 • augustawebadmin@augustacoop.com



CrystalBlox™ is the newest patented block form developed by CRYSTALYX® Brand Supplements. It combines the economical nutrient delivery and fortification of compressed blocks with the consistent and predictable intake of low moisture block technology. CrystalBlox will fit a wide variety of feeding situations, where protein delivery is critical.

FAQ's:

Q: What type or category of block is CrystalBlox?

A: CrystalBlox is a new hybrid form. It combines the nutrient payload of a compressed block with the added benefit of intake control with CRYSTALYX low moisture block (LMB) technology.

Q: Do the nutrient guarantees of the LMB and compressed portions differ?

A: The guaranteed analysis is the same for the LMB and compressed portions of the block. Both portions are formulated to meet the same label guarantees.

Q: If I have fed CRYSTALYX in the past, is CrystalBlox the right product for me?

A: Both product forms fit several supplement strategies. CrystalBlox can more easily and predictably meet higher protein supplementation needs with low quality forage feeding systems.

Q: What is the typical consumption rate of CrystalBlox?

A: 0.75 to 1.5 lbs/hd/day is a normal range with typical intakes in the 1 to 1.25 pound range. Results can be influenced by forage quality and availability, the number of animals per container, pasture size, container placement in a pasture, animal size and animal physiological stage of production.

Q: Is intake even across the surface of the block given different densities of the material?

A: Yes, intake is closely regulated by the CRYSTALYX center. The configuration of CrystalBlox encourages cattle to consume the supplement in a manner more consistent with CRYSTALYX licking rather than aggressively biting the compressed block portion. The combination of technologies, along with the pattern of CRYSTALYX embedded within the compressed block provides uniform consumption across the herd.

Q: What type of supplementation situations would be a good match for CrystalBlox?

A: CrystalBlox is designed and formulated to provide supplemental protein to help improve forage utilization by increased forage intake and improved fiber digestibility. In situations where forage crude protein levels are low due to drought or with advanced maturity such as fall and winter forages, CrystalBlox can provide the supplemental protein to help extract more energy and nutrients from your forage supplies.



For additional information or to place your CrystalBlox order contact Shawna Bratton at (540) 448-3665

HOW MUCH HAY DO YOU NEED THIS WINTER?

With short hay supplies, plan early for winter feed needs.

There are many ways to approach winter feed planning, but a simple one is to calculate feed needs versus feed available. Start with an inventory of all the cattle that you plan to winter, including replacement heifers, backgrounding calves and bulls, in addition to the main cow herd.

You'll also need approximate body weights to use in calculating feed needs. Next, inventory the feed resources available, approximate weights, dry matter and quality.

To calculate feed needs, multiply the number of animals times their weight. A general assumption is that cattle will eat 2.25% to 2.5% of their body weight in dry matter per day, so body weight times 2.5% times the number of days gives you approximately the amount of feed needed.

An example would be:

- 100 mature cows x 1,400 pounds = 140,000 lbs. x .025 = 3,500 lbs. DM/day x 150 days = 525,000 lbs.
- 20 first-calf heifers x 1,000 lbs. weight = 20,000 lbs. x .025 = 500 lbs. DM/day x 150 days = 75,000 lbs.
- 25 replacement heifers x 700 lbs. = 17,500 lbs. x .025 = 437.5 lbs. DM/day x 150 days = 65,625 lbs.
- 6 bulls x 2,000 lbs. = 12,000 lbs. x .025 = 300 lbs. DM/day x 150 days = 45,000 lbs.
- 65 background calves x 650 lbs. = 42,250 lbs. x .025 = 1,056 lbs. DM/day x 60 days = 63,375 lbs.

This example would need 774,000 pounds, or 387 tons, of hay on a dry matter basis. Assuming hay is 85% dry matter, 455 tons of as-fed hay is needed.

You also need to factor in some storage and feeding waste. Well-managed hay feeding with good hay bale feeders probably need to factor in 10% to 15% of waste, so now you need about 524 tons of hay for a five-month feeding period. This assumes you provide full feed of hay at all times.

A second step to forage planning is to allocate resources based on forage quality and nutrient needs for various time periods. First-cutting hay usually makes up about half of the total hay crop, but it also tends to be more mature, and therefore lower in quality. It is a good feed for midgestation cows, and maybe bulls after they are back in good condition.

Second and third cuttings tend to be higher-quality because they are less mature at harvest and are best targeted to late-gestation, calving and young stock. Grass hay tends to be a good match for weaned calves, provided it isn't too mature.

There are many things you can do to reduce the amount of hay needed: graze crop residue or cover crops, control feed waste, substitute lower-quality forages such as corn stover, limit feeding forage and supplement with corn or corn coproducts, or feed an ionophore. But having a rough plan for feed needs provides you the opportunity to prepare for the colder months ahead.

Denise Schwab - Iowa State University Extension Beef Specialist




online shopping
at AugustaCoop.com

Order from our online catalog of over **5000** items*

- Pick up in store for **FREE**
- Ship UPS to your location
- Purchase **\$250** worth of product and have it delivered within 30 miles of any Augusta Co-op store location



Vendor Day

Wednesday, February 19, 2020
3 PM - 8 PM

Weyers Cave Community Center
682 Weyers Cave Rd
Weyers Cave, VA

The largest farming brands on site in one location! Book your 2020 items at drastically reduced rates at our annual vendor day. Door prizes, food, educational seminars and much more!

For additional information visit
www.AugustaCoop.com
or call (540) 885-1265.

LAWN MOWER OR SNOW BLOWER NEED SERVICED?



FREE PICK UP & DELIVERY NOW THROUGH DECEMBER 31

Take advantage of this special offer today! Have your lawn mower or snow blower serviced by certified professional service technicians - servicing ALL BRANDS.

Free pick up & delivery within 20 miles of Staunton.



(540) 885-1265 x 223

HOLIDAY SAVINGS!

Check out these Holiday deals leading up to Christmas!

NOV. 25th-30th

30% OFF Accessories (Socks, Hats, Ball caps & westerns), Wallets, Buckles & Belts)

25% OFF Hooye Branded Items

30% OFF ARIAT Clothing

DEC. 2nd-7th

25% OFF Accessories

25% OFF CINCH Clothing

DEC. 9th-14th

20% OFF Accessories (Socks, Hats, Ball caps & westerns), Wallets, Buckles & Belts)

25% OFF Kimes Ranch Clothing & Hats

25% OFF Carhartt Clothing

DEC. 9th-24th

40% OFF All Fishing Supplies

20% OFF All Pet Supplies and Toys

15% OFF All Bird Houses, Feeders & Seed

10% OFF All Equine Tack

DEC. 16th-24th

40% OFF Gift wear (Fall & Christmas)

25% OFF All Toys

20% OFF All Wrangler Clothing

15% OFF Accessories

Visit AugustaCoop.com for our seasonal E-Coupons for more holiday deals (screenshot or printed coupons accepted)!

Milwaukee
POWER TOOLS
HAND TOOLS
INSTRUMENTS
ACCESSORIES

Melissa & Doug

Stop in to shop our new line-up of holiday toys including Melissa & Doug. Plus, shop our huge selection of Milwaukee power tools & YETI products!



EMBRACE ANY WEATHER



Shop the Valley's largest selection of work and equine riding boots.



BULK FEED TOTES



Augusta Co-op is now offering bulk feed in a 2,000* lb. tote (60"x48"x48") at all store locations.

BUY IN BULK & SAVE CUSTOM & STOCKED FEED RATIONS AVAILABLE.

Delivery options available (delivery fee will be applied). See store manager for details.
Weights may vary slightly per tote

Year End Farm Sale

December 1-31 • All Augusta Co-op store locations

Featured Brands

ENTIRE FARM SUPPLY CATEGORY ON SALE



DARE



NOV. 15TH-16TH PRE-BLACK FRIDAY SALE STAUNTON LOCATION ONLY!

Not all deals listed

ALL WRANGLER CLOTHING

30% OFF

In-stock only. Excludes clearance items. Valid only Nov. 15 & 16, 2019.

MEN & WOMEN CARHARTT LINED / INSULATED BIBS

\$30 OFF

In-stock only. Excludes clearance items. Valid only Nov. 15 & 16, 2019.

TOY SALE

30% OFF All Toys

ALL BOOTS

30% OFF All Boots (No Muck or Rubber)

In-stock only. Excludes clearance items. Valid only Nov. 15 & 16, 2019.

ALL OTHER CARHARTT CLOTHING

25% OFF

In-stock only. Excludes clearance items. Valid only Nov. 15 & 16, 2019.

November 15-16 ONLY!

MAGICAL KEY CONTEST

Receive one magical key each time you make a purchase from one of these departments: pet, clothing, toy, or show supplies. One winning key for each dept. will unlock the padlock & win a grand prize!

WIN A YETI Tundra 65!

For every \$200 in apparel and/or footwear purchases, receive one entry for a chance to win a Yeti Tundra 65.

No purchase necessary. Winner selected on Nov. 15 - Dec. 31 only. Grand \$500 and get 5 entries. No purchase necessary for a single entry. For multiple entries, a purchase is required.